

Orders that meet the following criteria ship in **2 weeks or less:**

- » **Standard square straight steel poles without any modifications** (i.e., special bolt circle, pole height other than listed here (cutback), drill mount and tenon top on same pole, mid-pole brackets, duplex/GFI receptacle, extended warranties, etc.)
- » **Standard T2 tenon or drilled up to four fixtures** (see page 2 for top-mount and bracket options)
- » **Dark Bronze, Textured Black, Textured Medium Bronze, Textured Grey, and Textured White powder-coat finish only**
- » **19 poles or less**

All poles that meet the criteria above are shipped out with a direct-drill or tenon-mount top (see page 2).

The following disqualifies an order from our quick-ship program; standard lead times and pricing will apply for such orders:

- » **Any pole modifications.**
- » **Color requests outside of those noted in the section above.**
- » **Orders of 20 poles or more.**

QUICK-SHIP POLES

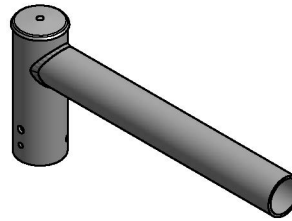
Catalog Number	Mounting Height (Ft)	Effective Projected Area Rating W/ 1.3 Gust (Sq. Ft.)			
		80	90	100	120
RPSQ-15-4-11	15	15.1	12.3	9.8	7.0
RPSQ-20-4-11	20	9.0	7.3	5.9	4.2
RPSQ-25-4-11	25	4.1	3.3	2.6	1.8
RPSQ-25-5-11	25	8.5	6.9	5.6	4.0
RPSQ-30-5-11	30	4.2	3.4	2.7	1.9
RPSQ-30-5-7	30	10.6	8.6	6.9	4.9

QUICK-SHIP DRILL, TENON, AND BRACKET OPTIONS

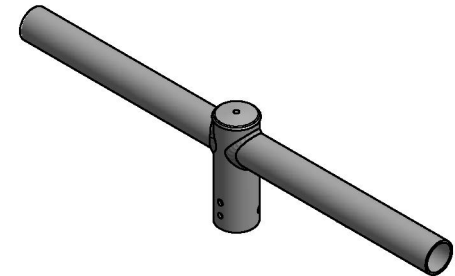
Below are the bracket options that may accompany the Square Straight Steel orders of a quantity of 19 or less poles and ship in 2 weeks or less. Selection of other brackets or colors outside of the color key excludes an order from the Quick-Ship Program.

Color Options for Quick-Ship Products

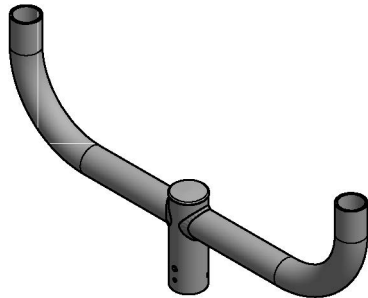
Design	Color
TWH	Textured White
DB	Dark Bronze
TMB	Textured Medium Bronze
TGR	Textured Gray
TBK	Textured Black



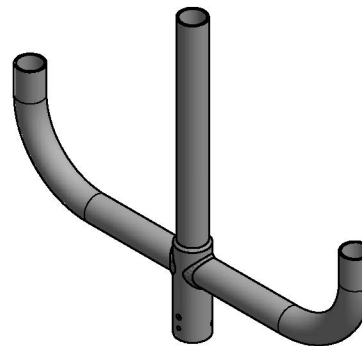
SB-19



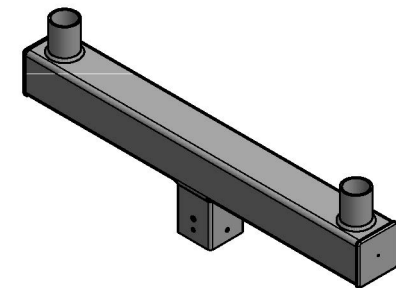
SB-218



PTB-2



PTB-3



SMB-2